



Rural Broadband



Jamie Zmitko-Somers
 Division Director
 Agriculture Development Division

1

Connecting Michigan Taskforce



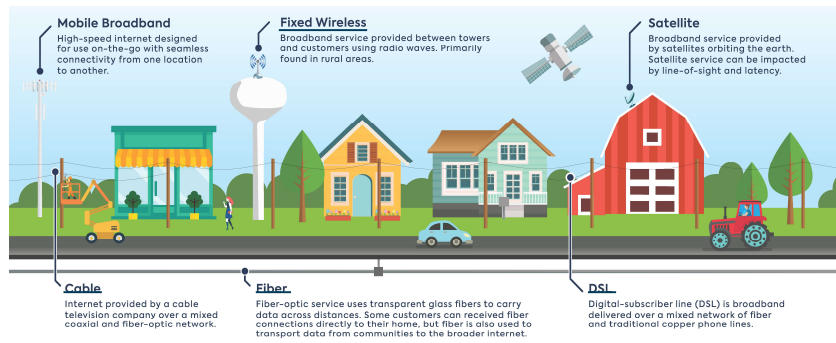
Established to:

1. Better coordinate broadband activity among state agencies;
2. Collectively advocate for Michigan broadband at the federal level; and
3. Implement projects to improve the access, adoption, and use of broadband for residents, businesses, and institutions.

Facilitated by Connected Nation Michigan

2

What is Broadband?

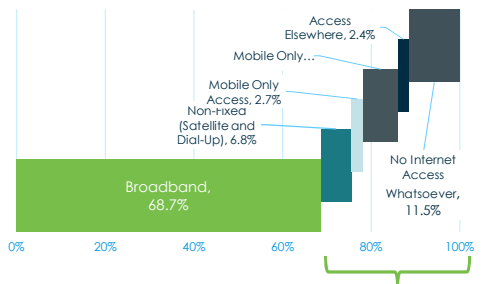


3

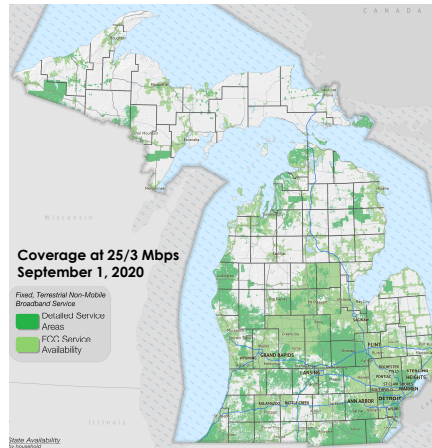
3

Broadband in Michigan

Broadband Among Michigan Households, 2019



1.24M households do not have a fixed, terrestrial broadband connection



4

4

Broadband Speeds

	10 Mbps	25 Mbps	1 Gbps
Estimated time to download 2 GB file:	29 minutes	11 minutes	17 seconds
Devices Supported:	1 or 2	3 to 5	10+
Activities Supported:	Web surfing, e-mail, & moderate HD streaming	Heavy HD streaming, video conferencing, large file transfer	Extreme HD, real-time streaming, frequent & huge file transfers
Primarily used by:	Homes & Some Businesses	Homes & Businesses	Businesses & Some Homes



5

Federal Updates

Emergency Broadband Benefit

- \$50 per month discount on internet service, should be implemented by the end of March

<https://www.fcc.gov/broadbandbenefit>

Rural Digital Opportunity Fund (RDOF)

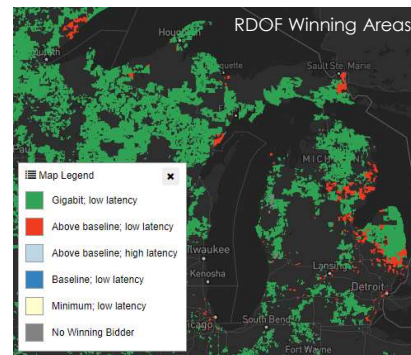
- \$20.4B fund for rural broadband
- MI ISPs won \$363M to serve 250k locations over next six years

Rural and Tribal Funds

- \$300M for rural broadband
- \$1B for tribal connectivity

USDA ReConnect Program

- 4 recipients
- Work completed by 2025
- Target most rural areas
- 19,800 households



6

6

State Updates

Connecting Michigan Communities Grant Program (DTMB)

- Began in 2018 with \$20M, received \$14.3M from legislature in 2020
- 10 grants awarded in 2020, 7 more in review, and several others moving through evaluation now to be announced in June 2021
- <https://www.michigan.gov/cmiggrant>

7

7

Importance to Michigan Food & Agriculture Industry

- Agriculture technology
- Workforce
- Rural areas

- Proposed Office of Rural Development
 - Supplemental - \$1 million grants & \$87,000 staff person
 - FY 22 budget – funding for 1 FTE



8



Questions?

Jamie Zmitko-Somers
zmitkosomersj@michigan.gov

 Michigan Department of
AGRICULTURE
& Rural Development

 @MIDeptofAgriculture

 @MichDeptofAg

 Michigan Department
of Agriculture & Rural
Development

 @MichiganAgriculture

 Michigan Department
of Agriculture & Rural
Development

9