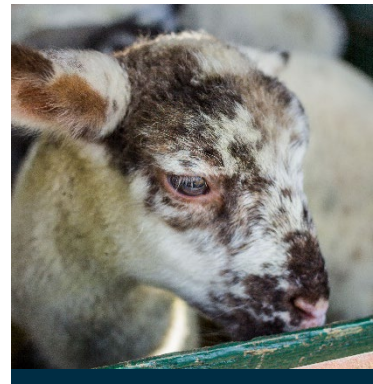


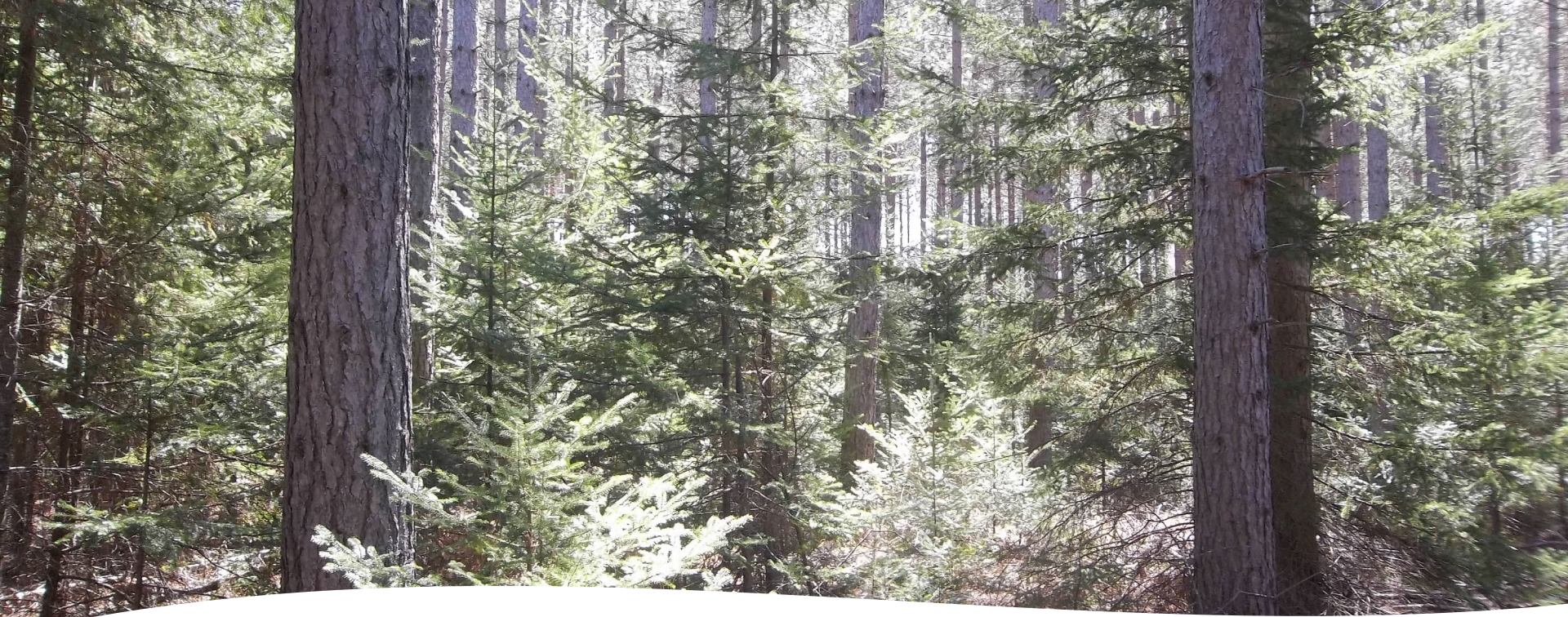


PRIVATE FOREST LANDS PROGRAMS



John Switzer
Conservation Programs
Manager

Ben Schram
Forestry Assistance Program
Coordinator



Why Forests are Important to Michigan

- Michigan has 20 million acres of forested land
- Our forest products industry supports 99,234 jobs and provides \$21.2 billion annually to Michigan's economy
- Clean air, clean drinking water, stabilize soil, wildlife habitat

Why Private Forest Lands Programs

- 9 million acres are privately owned family forests
- More than 400,000 individual landowners
- Only 20% of private forest land is actively managed
- Sustainably managed forests:
 - Are healthier, resilient
 - More productive
 - Provide diverse wildlife habitat



MDARD's Forestry Programs

Qualified Forest Program (QFP)

Forestry Assistance Program (FAP)

Relatively New for MDARD

- QFP transferred from DNR in June 2013
 - 94,577 acres enrolled at that time
- FAP created at the same time to complement QFP
 - 13 foresters in 2013
 - 19 foresters in 2021



Qualified Forest Program

Benefits to Landowners

- Property tax exemption
- Prevents “uncapping”
- A plan for the forest
- Income from timber sale
- Reduced ownership costs
- Making the land affordable for new owners

Benefits to Michigan

- Wood to market
- Resilient forests
- Keep forests as forests



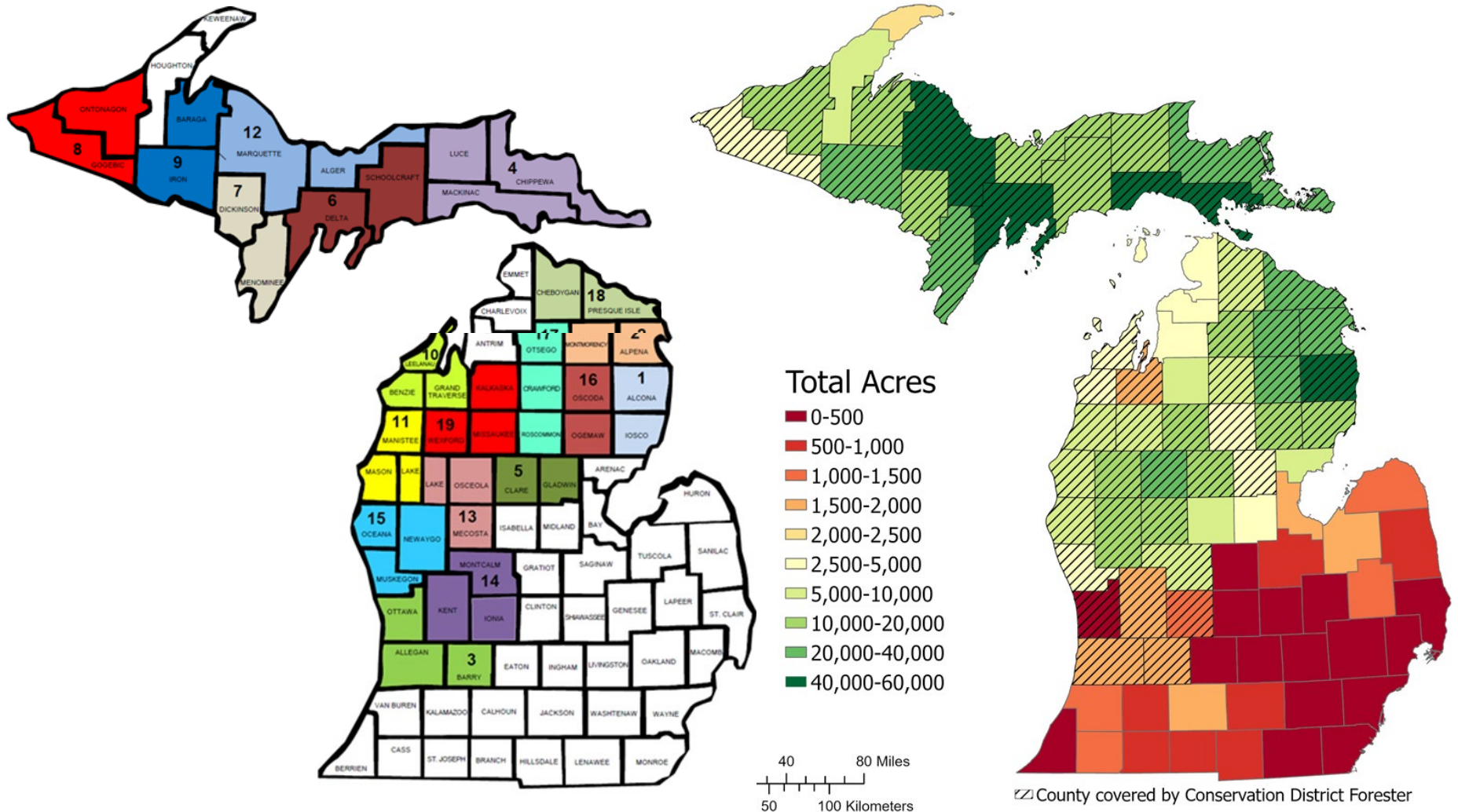


MICHIGAN FORESTRY Assistance Program

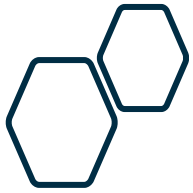
- Support family forest owners in realizing the economic, social, and ecological sustainability of their forests
- Values
- **FAP does not compete with the private sector**
- Support enrollment in QFP



Two Programs Working Together



736,307 acres enrolled as of Dec 31, 2020



Integration with Other Programs

- Michigan Agriculture Environmental Assurance Program
- Michigan Tree Farm Program
- Forest Stewardship Program
- Michigan Invasive Species Program
- USDA Farm Bill Programs



Measuring up



Activity	2015	2016	2017	2018	2019	2020	Total
Site Visits	2,012	2,219	2,039	2,007	2,098	2,021	12,396
Economic Activity (million \$)	\$8.5	\$9.8	\$10.2	\$9.7	\$12.7	\$13.4	\$64.2
Workshops	346	338	407	368	398	190	2,047
Referrals	1,464	1,433	1,527	1,977	1,926	3,106	11,433
QFP acres	81,875	68,493	77,224	52,929	167,882	70,678	736,307

FY22 Proposed Funding

Appropriation #60900

- Private Forest Land Enhancement Fund \$1,080,100
- General Fund \$1,571,600
- Total \$2,651,700
- FTE = 9.0
- 19 CD Foresters*



Additional Efforts to Support/Expand

- Reforestation in NE MI
- Drinking Water Forestry in SE MI



Questions?

John Switzer

Conservation Programs Manager
SwitzerJ3@michigan.gov

Ben Schram

Forestry Assistance Program Coordinator
SchramB1@michigan.gov



@MIDeptofAgriculture



@MichDeptofAg



Michigan Department
of Agriculture & Rural
Development



@MichiganAgriculture



Michigan Department
of Agriculture & Rural
Development