

# State Parks & Recreation Parks, Beaches & Trails



*Presented by:  
Ron Olson, Chief  
Parks & Recreation*

*House Appropriations  
Subcommittee on  
Natural Resources*

March 23, 2017

# State Parks & Recreation Opportunities



- 103 diverse state parks and recreation areas
- 138 state forest campgrounds
- Host 26 million visitors annually in state parks, including 4 million at Belle Isle
- Over 1 million camp nights, second in the nation
- Camping nights up 6.4% in state parks and 16% in state forest campgrounds
- \$22.8 billion tourism industry supporting 214,000 jobs
- 91% satisfaction rating from user survey

## State Parks & Recreation Opportunities



- 19 state-owned harbors
- 12,500 miles of dedicated trails, including motorized and non-motorized trails
- Over 2,600 miles of rail trails (1st in nation)
- 1,300 boating access sites and 80 public harbors support \$3.9 billion boating industry
- Manage over 300,000 acres for recreation

## State Parks, Recreational Boating & Trails FY 2017 Operating Appropriations

### State Parks

- Park Improvement Fund – 63%
  - Camping
  - Recreation Passport
  - Use Permits
- Park Endowment Fund – 31%
  - Gas/Oil/Mineral Royalties
- General Fund – 3%
  - Belle Isle
- Others – 3%

### Forest Recreation & Trails

- Off-Road Vehicle Trail Improvement – 21%
  - Trail Stickers
  - Licenses
- Forest Recreation – 7%
  - Camping Fees
  - Recreation Passport
- Snowmobile Trail Improvement – 40%
  - Trail Stickers
  - Gas Tax
- General Fund (for non-motorized) – 4%
- National Recreational Trails – 16%
  - Grants
- Recreation Improvement – 5%
  - Gas Tax
- Others – 7%
  - Federal

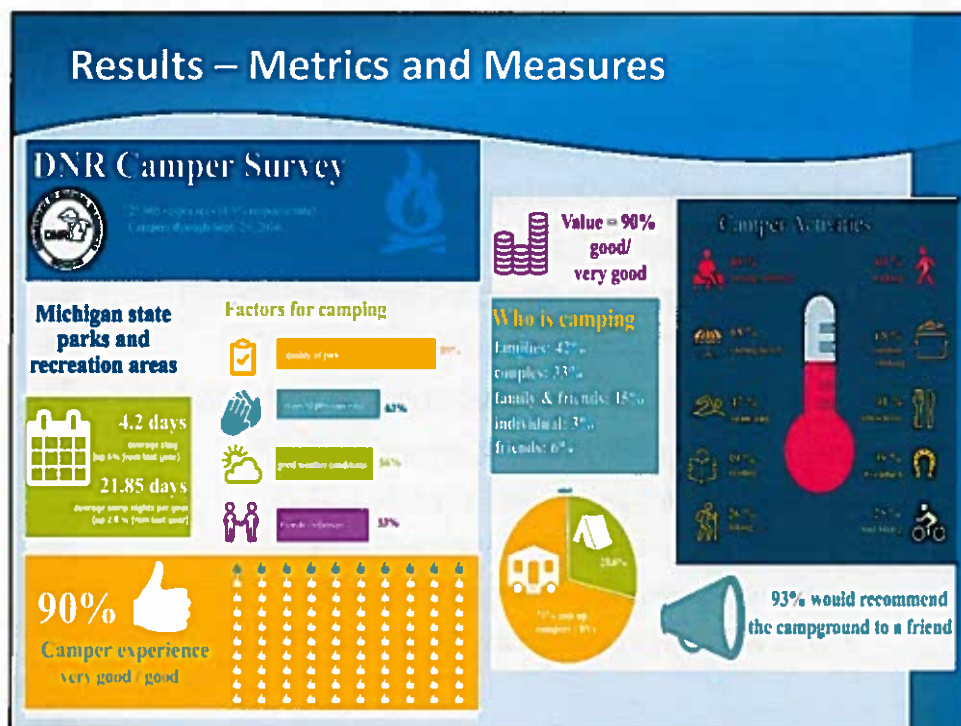
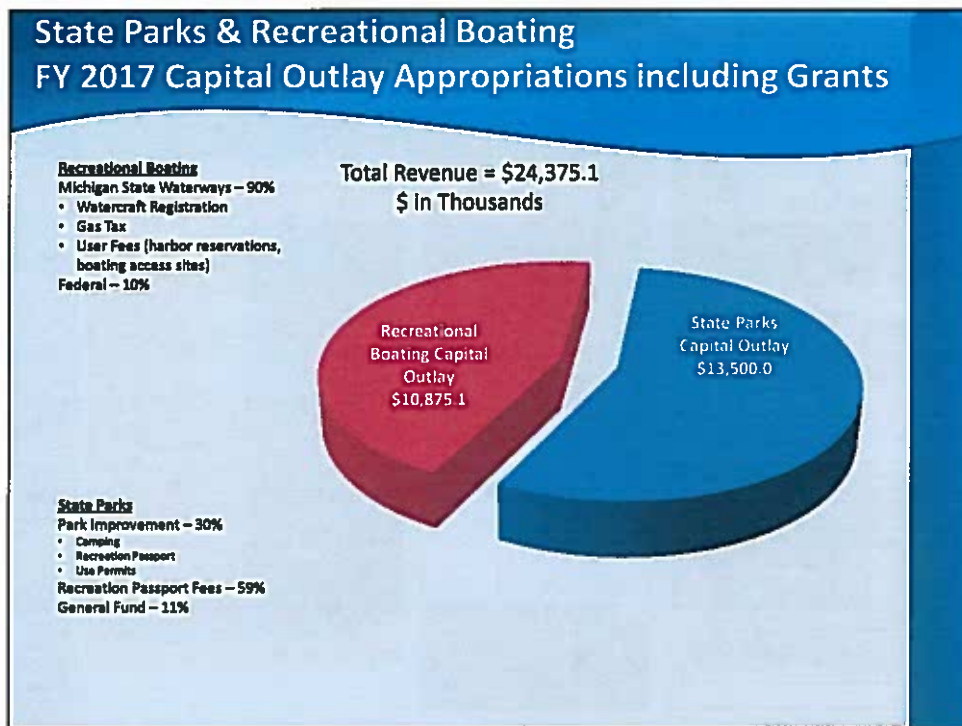
Total = \$108,761.6  
\$ In Thousands



\* Camping fees, Recreation Passport, and Park Endowment Fund make up the largest portion of park revenues

### Recreational Boating

- Waterways – 91%
  - Watercraft Registration
  - Gas Tax
  - User Fees (harbor reservations, boating access sites)
- Federal – 9%



## Sustainability: State Parks are Green Detroit Free Press Award



Solar charging station



Car Charging Station



Recycling Station



Wind Turbines



## Stakeholder Advisory Groups

- **Program and policy development guided by groups:**
  - Natural Resources Commission (NRC)
    - Michigan State Park Advisory Committee (MSPAC)
  - Belle Isle Park Advisory Committee (BIPAC)
  - Michigan State Waterways Commission (MSWC)
  - Michigan Trails Advisory Council (MTAC)
    - Equine Trails Subcommittee (ETS)
    - Non-motorized Advisory Workgroup (NAW)
    - Snowmobile Advisory Workgroup (SAW)
    - Off-Road Vehicle Advisory Workgroup (ORVAW)



## State Parks & Recreation Infrastructure – Comparable To A Small City

- Each park can host between a few thousand to over 30,000 visitors daily
- The Michigan State Parks System (exclusive of Belle Isle Park):
  - 1,351 buildings
  - 468 miles of paved roads
  - 43,092 paved parking spaces
  - 12,500+ miles of trails
  - 12,423 campsites with electrical service
  - 4,272 rustic campsites
  - 49 wastewater lagoons
  - 232 septic fields
  - 68 sanitation stations
  - 93 water systems
  - 152 state forest campground water hand pumps
  - 40 dams

### State Parks & Recreation Infrastructure – Comparable To A Small City

- DNR partners with over 200 local communities in recreational opportunities
- State Parks & Recreation Areas host some of the world’s most exemplary natural features
- Asset replacement value of Michigan State Parks System exceeds \$1 billion

### Michigan State Parks and Recreation System Infrastructure Needs

**State Park System Grand Total: 600 Projects**

- Estimated \$285,513,487 in identified infrastructure project needs

**State Waterways System Grand Total: 143 Projects**

- Estimated \$43,168,490 in identified infrastructure needs

**State Trails System Grand Total: 148 Projects (excluding Iron Belle Trail)**

- Estimated \$42,000,000 in identified infrastructure needs







## State Parks & Recreation Infrastructure Needs – FY 2018 Five-Year Capital Outlay Plan

Type of Infrastructure Project	Est. Amount
<b>Buildings</b> - Replacement, renovation, repair and demolition	\$73,915,000
<b>Roads and Parking Areas</b> - Preventative maintenance, repair and replacement	\$61,666,250
<b>Major Development</b> – Complex and extensive development and modernization, including multiple failing utility and road systems	\$53,397,500
<b>Utilities</b> - Replacement, repair and necessary modifications	\$36,297,237
<b>Recreational Structures</b> - Replacement, repair and modifications to: boardwalks, observation decks, fishing piers, floating platforms, playgrounds and field / court areas.	\$34,459,000
<b>Historical Structures</b> - Replacement, repair and accessibility modifications to designated historical structures and amenities.	\$15,615,000
<b>Operational Structures</b> - Replacement, repair, maintenance and modifications to bridges, dams and other operational features.	\$8,253,500
<b>Habitat Restoration</b> – Invasive species control, natural resource protection and the restoration of critical or damaged habitats.	\$1,910,000
<b>Total of over 600 Infrastructure Projects</b>	<b>\$285,513,487</b>

## State Parks & Recreation Infrastructure - Most Critical Needs

Type of Infrastructure Project	Est. Amount
<b>Buildings</b> - Replacement, renovation, repair and demolition	\$6,879,600
<b>Roads and Parking Areas</b> - Preventative maintenance, repair and replacement	\$4,681,500
<b>Major Development</b> – Complex and extensive development and modernization, including multiple failing utility and road systems	\$13,676,000
<b>Utilities</b> - Replacement, repair and necessary modifications	\$21,425,494
<b>Recreational Structures</b> - Replacement, repair and modifications to: boardwalks, observation decks, fishing piers, floating platforms, playgrounds and field / court areas.	\$1,040,000
<b>Operational Structures</b> - Replacement, repair, maintenance and modifications to bridges, dams and other operational features.	\$1,398,800
<b>Other</b> - Includes habitat restoration and historical structures	910,000
<b>TOTAL:</b>	<b>\$50,011,394</b>





## Western Upper Peninsula Storm Damage

July 10, 2016 - flood event

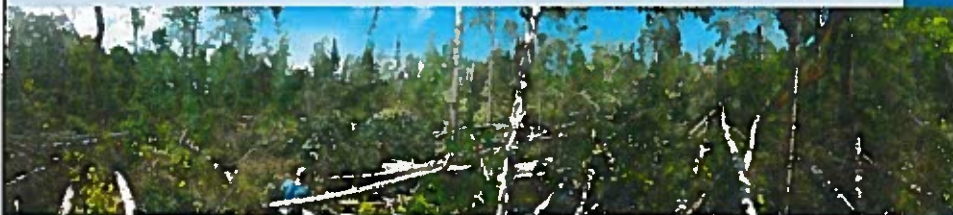
- Obliterated trails, closed boat launch, search and rescue of back country hikers and campers



## Western Upper Peninsula Storm Damage

July 20, 2016 - wind event

- Closed Emily Lake State Forest campground
- Obliterated miles of trails at the Porcupine Mountains



## FY 2018 State Parks & Recreation Infrastructure Investment

- \$8.0 million Recreation Passport Fees
- \$11.5 million General Fund
  - \$1.5 million ongoing General Fund
  - **\$10.0 million one-time General Fund**
- \$19.5 Million Total

## FY 2018 State Parks & Recreation Infrastructure Projects - \$10 million one-time General Fund

Improvement Category	County	Project Location	Project Description	Est. FY2018
Utilities (water, sewer, electrical, stormwater) & Major Redevelopment	Mason	Ludington SP	<ul style="list-style-type: none"> <li>• Update/replace Electrical System in Beachwood Campground Loop</li> <li>• Improve vehicle/pedestrian circulation in conjunction with expanding day use parking lot</li> </ul>	\$1,976,000
Utilities (water, sewer, electrical, stormwater)	Grand Traverse	Traverse City SP	<ul style="list-style-type: none"> <li>• Campground water line</li> <li>• Update/replace electrical system</li> </ul>	\$2,080,000
Utilities (water, sewer, electrical, stormwater) & Building Renovation/Replacement	Grand Traverse	Interlochen SP	<ul style="list-style-type: none"> <li>• Replace/renovate substandard and energy inefficient sewerage lagoon lift station</li> <li>• Renovate/replace concession building for code and ADA standards compliance.</li> </ul>	\$598,000
Major Redevelopment	Oceana	Silver Lake SP	<ul style="list-style-type: none"> <li>• Repair/Replace Ruckel's Bridge to reduce flooding potential and enhance public safety.</li> </ul>	\$312,000
Building Renovation/Replacement	Muskegon	Muskegon SP	<ul style="list-style-type: none"> <li>• Renovate/replace a Toilet/shower buildings for code and ADA standards compliance.</li> </ul>	\$572,000

## FY 2018 State Parks & Recreation Infrastructure Projects - \$10 million one-time General Fund

Improvement Category	County	Project Location	Project Description	Est. FY2018
Roads/ Parking Systems, Recreation Structures, Environmental Protection, Utilities (water, sewer, electrical, stormwater), Building Renovation/ Replacement	Luce	Tahquamenon Falls SP	<ul style="list-style-type: none"> <li>Parking area rehabilitation.</li> <li>Upgrade/replace lower falls access road to mitigate the negative impact of underground natural springs on road stability.</li> <li>Redevelop safe &amp; accessible boat concession.</li> <li>Stabilization/ Erosion control of Tahquamenon River Bank at River mouth Campground</li> <li>Replace/upgrade water wells at upper falls</li> <li>Renovate/Replace lower falls concession and store for code and ADA standards compliant building and restroom.</li> <li>Campground redevelopment/ relocation due to severe erosion threatening critical infrastructure.</li> </ul>	\$3,147,500
Major Redevelopment	Houghton	McLain SP		\$1,314,500
<b>Total General Fund Projects</b>				<b>\$10,000,000</b>

## FY2016 Recreation Passport Results

- 31.9% participation
- \$27.6 million in revenue, including:
  - \$7 million to state park infrastructure
  - \$15.7 million to state park operations
  - \$1.4 million to local grants
  - \$1.1 million to recreational boating
  - \$1 million to forest recreation
  - \$1 million to Secretary of State
  - \$384,800 to cultural & historical resources
  - \$35,000 to marketing



## Long-Term Funding Option for State Park Infrastructure

- Expand Recreation Passport to Full Opt-Out
  - Realistically
    - 40% - 50% participation
      - Additional \$3.6 to \$8.0 million for infrastructure
      - Additional \$2.2 to \$4.8 million for operations
  - Optimistically
    - 50% - 60% participation
      - Additional \$8.0 to \$12.4 million for infrastructure
      - Additional \$4.8 to \$7.4 million for operations



## Managing for the Future

Responsibly managing infrastructure backlog and emergent facility needs into the future, will continue to focus on:

- Sustainably contracting
- Leveraging funding
- Partnering
- Responding to trends (e.g. innovative overnight lodging options)
- Considering return on investment (ROI)
- Implementing a robust asset management and preventative maintenance system, for efficiencies

# Beaches



## State Parks and Recreation Beaches

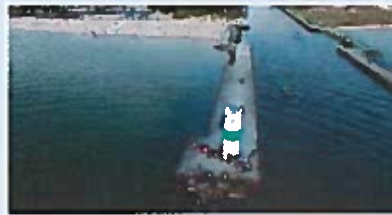
- 24 designated Great Lakes beaches
- Economic driver for recreation system
- Beach safety improvements
  - Signs, flags, life jackets
- Presenting at Great Lakes Water Safety Conference – April, 2017
  
- DEQ is responsible for beach monitoring relative to water quality and safety



## State Parks and Recreation Beach Accessibility



Accessible walkways and mobi-chairs



## Trails



# Motorized Program

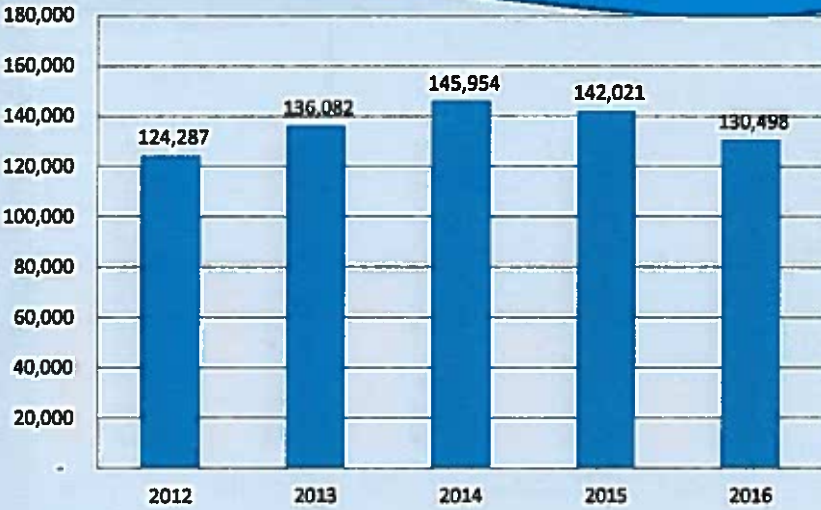
DNR partnered with 68 trail sponsors for its snowmobile program



Five state parks now provide direct ORV trail access while new trails and bridges were opened in 2016



# Snowmobile Trail Permits



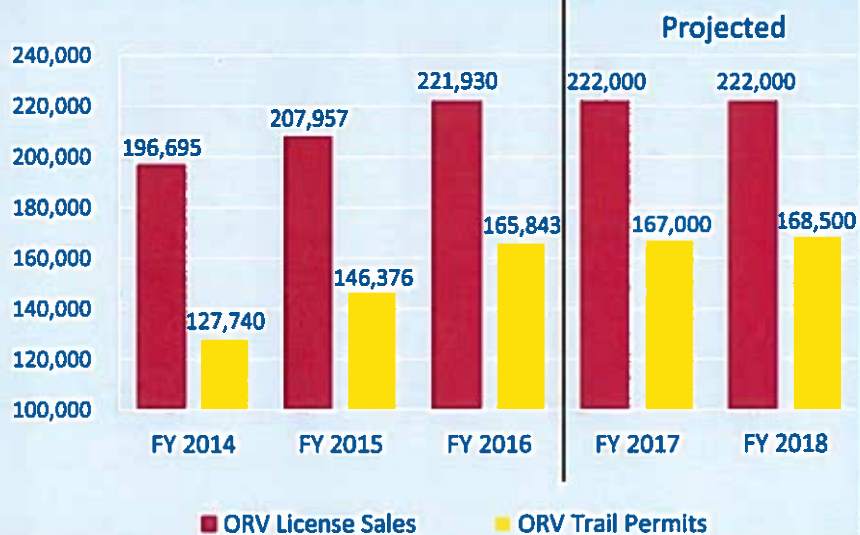
*\*2016 sales were 8.1% down from 2015.*

## ORV License Restructuring

- New license structure implemented 3/1/14
  - Increase in ORV license fees from \$16.25 to \$26.25
  - Addition of the \$10 ORV trail permit for riding on state-designated ORV trails
- Sunset on ORV license and trail permit fees:  
**3/31/19**



## ORV License & Trail Permit Sales





## Special Projects: Silver Lake Sand Dunes ORV Area – Up almost 10% in FY 2016

	2015	2016
Number of ORVs entering in a one-hour period	760	814
Memorial Day ORVs - total	15,393	17,803
July 4 ORVs - total	11,700	14,448
Labor Day ORVs - total	11,808	13,365
Commercial Filming Permits (includes Wardens)	4	11
Major ORV Events	10	12
ORV Sticker Sales		
Base Permit	18,496	20,159
Trail Permit	19,177	20,705
Vehicle Man. Test Permits	11	16
ORV Revenue Total	\$757,122	\$827,954

### Dune ready plan to improve efficiency:

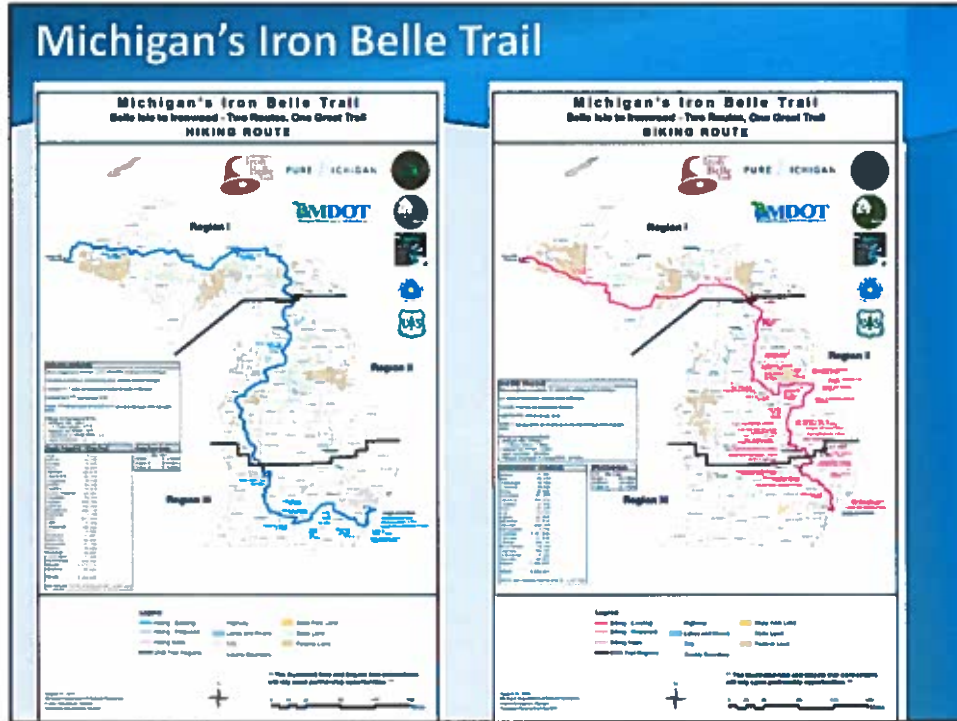
- SLORVA Volunteers assist with parking busy weekends
- Increased effective use of parking spaces, allowed more vehicles to park, improved traffic flow, informed visitors
- Silver Lake Recreation Association (SLRA) was formed from SLORVA ; a non-profit organization, working on plan



## Michigan's Iron Belle Trail

- Awarded \$350,000 General Fund in community grants for Iron Belle Trail projects
- Made headlines across the state for partnerships, planning efforts and completed projects
- Opened a 4.2 mile section of the Iron Belle Trail from Ironwood to Bessemer





## Raising Private Dollars For Trails

- The DNR continued its efforts in 2016 to meet with potential donors and raise money for trail improvements and future endowments. One of the biggest victories of 2016 was a pledge of over \$5 million from Mr. Michael R. Levine toward the Lakelands Trail system.




## Connect Trails to Communities



- **Objective:** Provide match for investments from non-profit groups, trail organizations, and the philanthropic community to further develop the Iron Belle Trail
- **Performance Measures:**
  - Increase completed miles of the trail
  - Increase funds leveraged from local partners
- **FY 2018 Investment:** \$5 million one-time General Fund

## Thank You – Questions?



