

# Stormwater & Green Infrastructure



Nicholas Occhipinti  
Government Affairs Director  
[nickocchipinti@michiganlcv.org](mailto:nickocchipinti@michiganlcv.org)

Hallie Fox  
Government Affairs Coordinator  
[hallie@michiganlcv.org](mailto:hallie@michiganlcv.org)

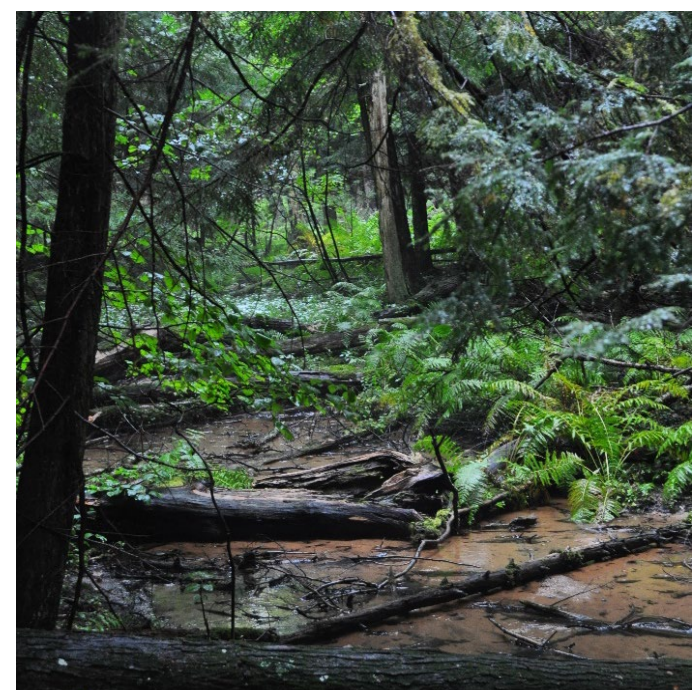
# What Is Stormwater?

## **Natural Environment:**

Rain falls to the ground and is absorbed where it lands (pervious surfaces).

## **Built Environment:**

Rooftops, roadways, driveways and parking lots prevent rain from soaking in (impervious surfaces).



# Stormwater Runoff and Associated Problems

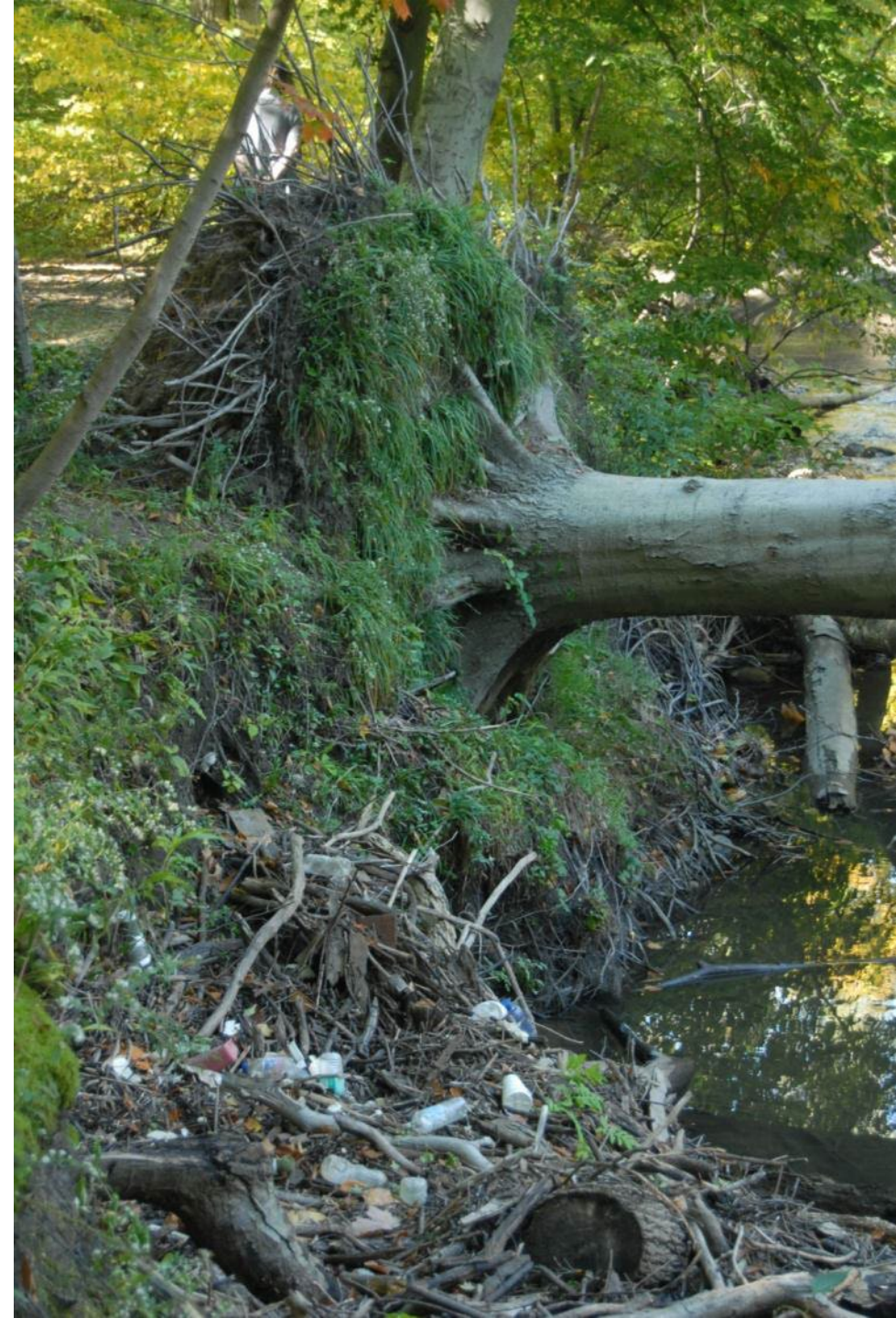
Overloading of stormwater infrastructure can lead to widespread property damage and extreme flooding during heavy rainfall.



# Stormwater Runoff and Associated Problems

## Results in:

- Flashy streams
  - Erosion
  - Trash
  - Thermal pollution
  - Nutrient loading
  - Habitat loss
- Poor water quality!



# Solutions to Reduce Stormwater Runoff

Low Impact Development (LID)

Green Infrastructure (GI)

**Key Takeaway:** Effective strategies reduce percentage of impervious groundcover and increase stormwater retention



# Green Infrastructure

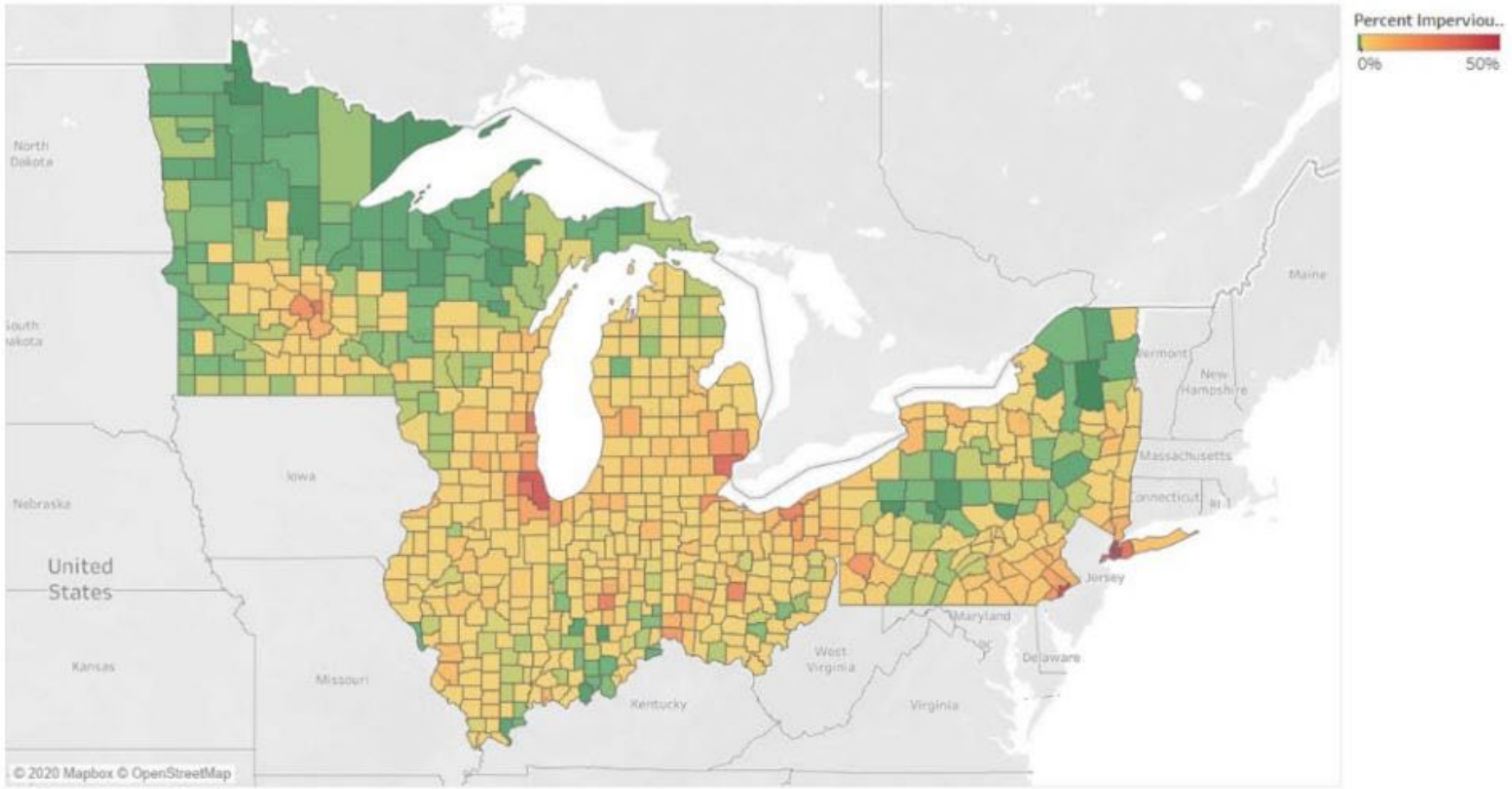
## Strategies:

- Rain barrels
- Graded riverbanks
- Green catch basins
- Curb cuts
- Green roofs
- Permeable pavements
- Watershed planning



# Percent Impervious Groundcover in Great Lakes Region (EPA)

Percent Impervious Ground Cover



Map based on Longitude (generated) and Latitude (generated). Colour shows details about Percent Impervious Surface. Details are shown for State and County Name.



# Thank You!



Nicholas Occhipinti  
Government Affairs Director  
[nickocchipinti@michiganlcv.org](mailto:nickocchipinti@michiganlcv.org)